

NOTES:

1. AIR/SOAP TEST PRIMARY TANK TO 3.5 PSI
2. EXTERNAL FINISH: SP-6 BLAST
3. APPLY TWO COATS OF POLYURETHANE WHITE.
4. TOTAL ESTIMATED SHIPPING WEIGHT (TANK+SKID) IS 6895KG. (15200 LBS).
5. TANK IS CONTAINED 300"
6. HEADS ARE 100% CONTAINED.
7. TANK IS BUILT TO ULC S601
8. TANK IS 100% CONTAINED

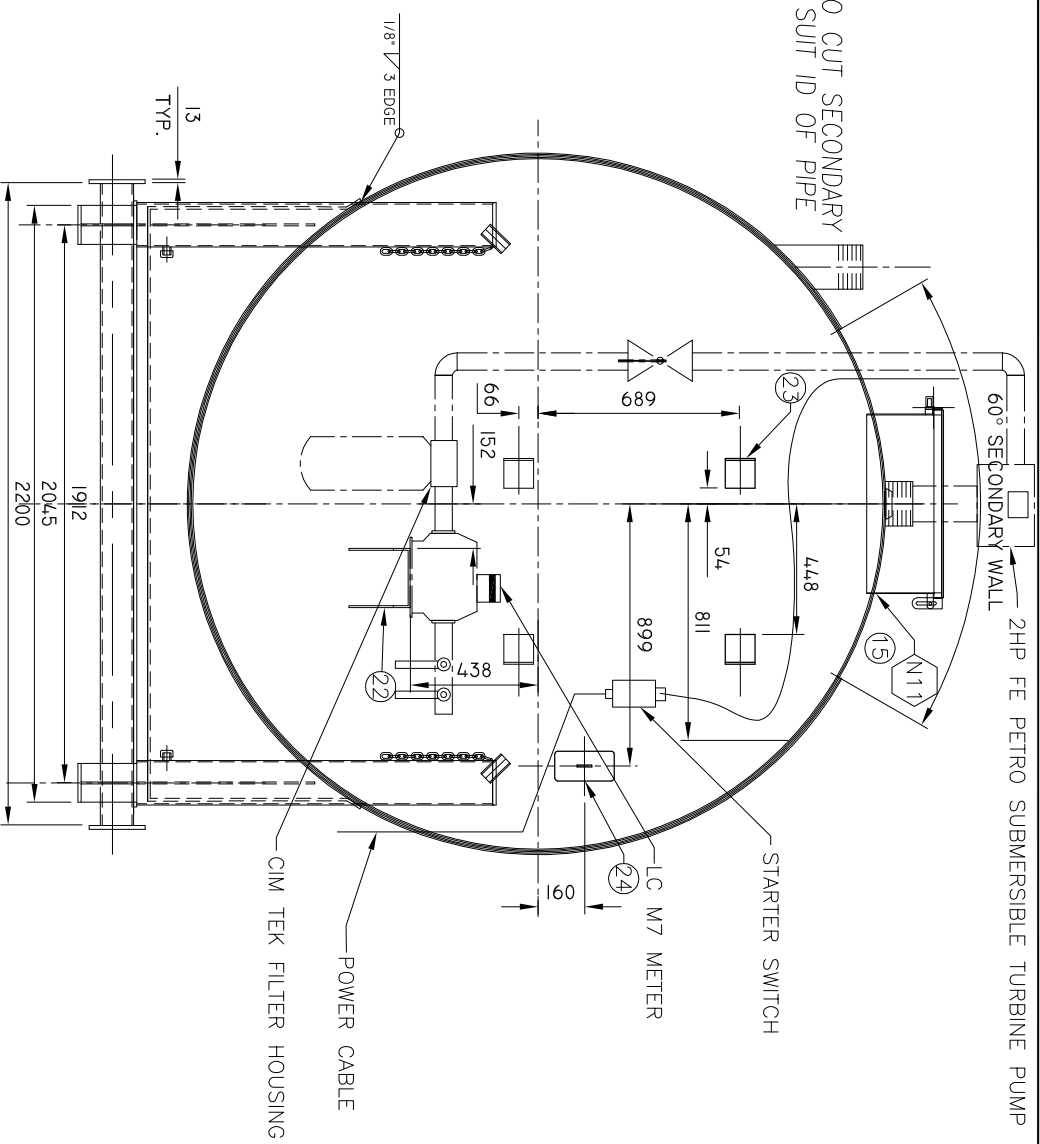
REV	DATE	DESCRIPTION	BY
1	22-JAN-'18	REVISED AS PER THE MARK UPS	S.P.
0	21-JAN-'18	ISSUED FOR CUSTOMER APPROVAL	S.P.

DATE	SCALE	CHECKED	APP'D	TITLE	CUSTOMER:	DRAWING NUMBER
21-JAN-'18	NTS	N.P.	D.M.	35KLTR-TD-DW C/W OVERFILL VALVE-G.A.		5601-35KLTR-TD (SHT. 01 OF 02)



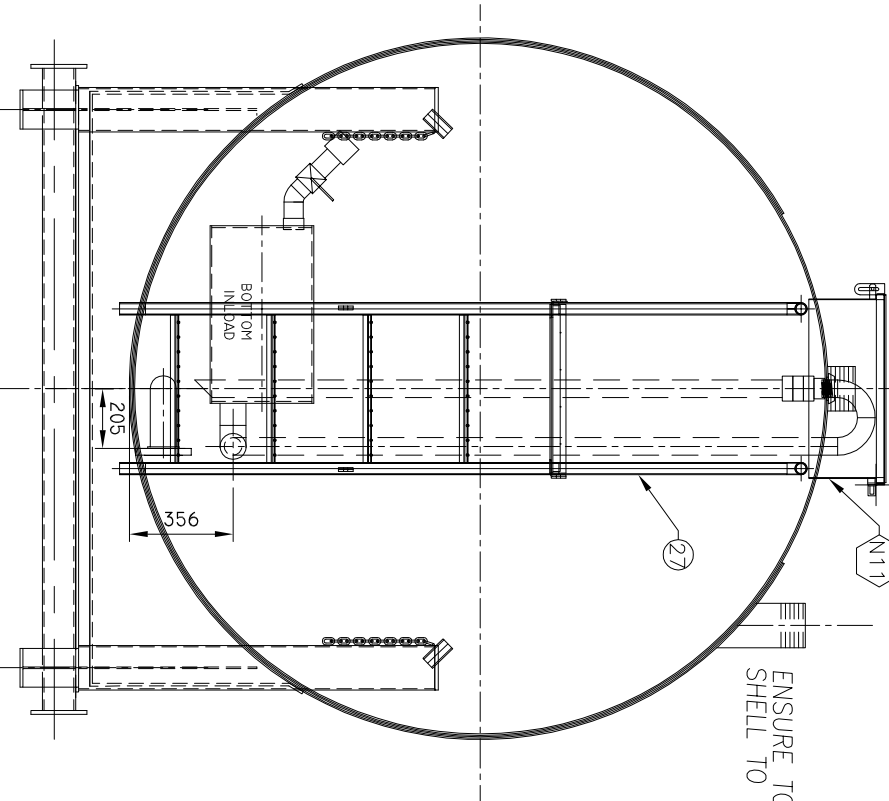
BILL OF MATERIAL

ITEM	QTY	PART	DESCRIPTION	MATERIAL	#	WGT
1	2	PRI-HEAD	96 1/2" x 3/16" (93 1/2" OD)	A44W		
2	2	SEC-HEAD	97" x 3/16" (94 1/4" OD)	A44W		
3	3	PRI-SHELL	72" x 295" x 3/16"	A44W		
4	3	SEC-SHELL	72" x 245" x 3/16"	A44W		
5	2	SEC-SHELL	48" x 245" x 3/16"	A44W		
6	1	N1	NPT #50 (2") WELD FLANGE (SPARE)	CS		
7	1	N2	NPT #50 (2") C.I. PLUG	CS		
8	1	N3	NPT #100 (4") WELD FLANGE (SPARE)	CS		
9	1	N4	NPT #100 (4") C.I. PLUG	CS		
10	1	N5	NPT #100 (4") WELD FLANGE (SPARE)	CS		
11	1	N6	NPT #100 (4") C.I. PLUG	CS		
12	1	N7	NPT #75 (3") WELD FLANGE	CS		
13	1	N8	NPT #75 (3") C.I. PLUG	CS		
14	1	N9	NPT #75 (3") WELD FLANGE	CS		
15	1	N10	NPT #75 (3") C.I. PLUG	CS		
16	1	N11	NPT #100 (4") WELD FLANGE (SPARE)	CS		
17	1	N12	NPT #100 (4") C.I. PLUG	CS		
18	1	N13	NPT #100 (4") WELD FLANGE (SPARE)	CS		
19	1	N14	NPT #100 (4") C.I. PLUG	CS		
20	1	N15	NPT #100 (4") WELD FLANGE (SPARE)	CS		
21	1	N16	NPT #100 (4") C.I. PLUG	CS		
22	1	N17	NPT #100 (4") WELD FLANGE (SPARE)	CS		
23	1	N18	NPT #100 (4") C.I. PLUG	CS		
24	1	N19	NPT #100 (4") WELD FLANGE (SPARE)	CS		
25	1	N20	NPT #100 (4") C.I. PLUG	CS		
26	1	N21	NPT #100 (4") WELD FLANGE (SPARE)	CS		
27	1	N22	NPT #100 (4") C.I. PLUG	CS		



END VIEW (A-A)

ENSURE TO CUT SECONDARY SHELL TO SUIT ID OF PIPE



END VIEW (B-B)

REV	DATE	DESCRIPTION
1	22-JAN-'18	REVISED AS PER THE MARK UPS
0	21-JAN-'18	ISSUED FOR CUSTOMER APPROVAL

BY	S.P.	TITLE: 35KLTR-TD-DW C/W OVERFILL VALVE-G.A.	DRAWING NUMBER	REV
	S.P.		S601-35KLTR-TD	1

DATE	SCALE	CHECKED	APP'D
21-JAN-'18	NTS	N.P.	D.M.

CUSTOMER: